

<https://entrapov.com/>



# Recommended Flow



- **Team**
- **Company Mission**
- **Product**
- **Solution & Positioning**
- **Market Profile**

- **Competitive Profile**
- **Revenue Model**
- **Financials**
- **Ask | Use of Funds**

# Team

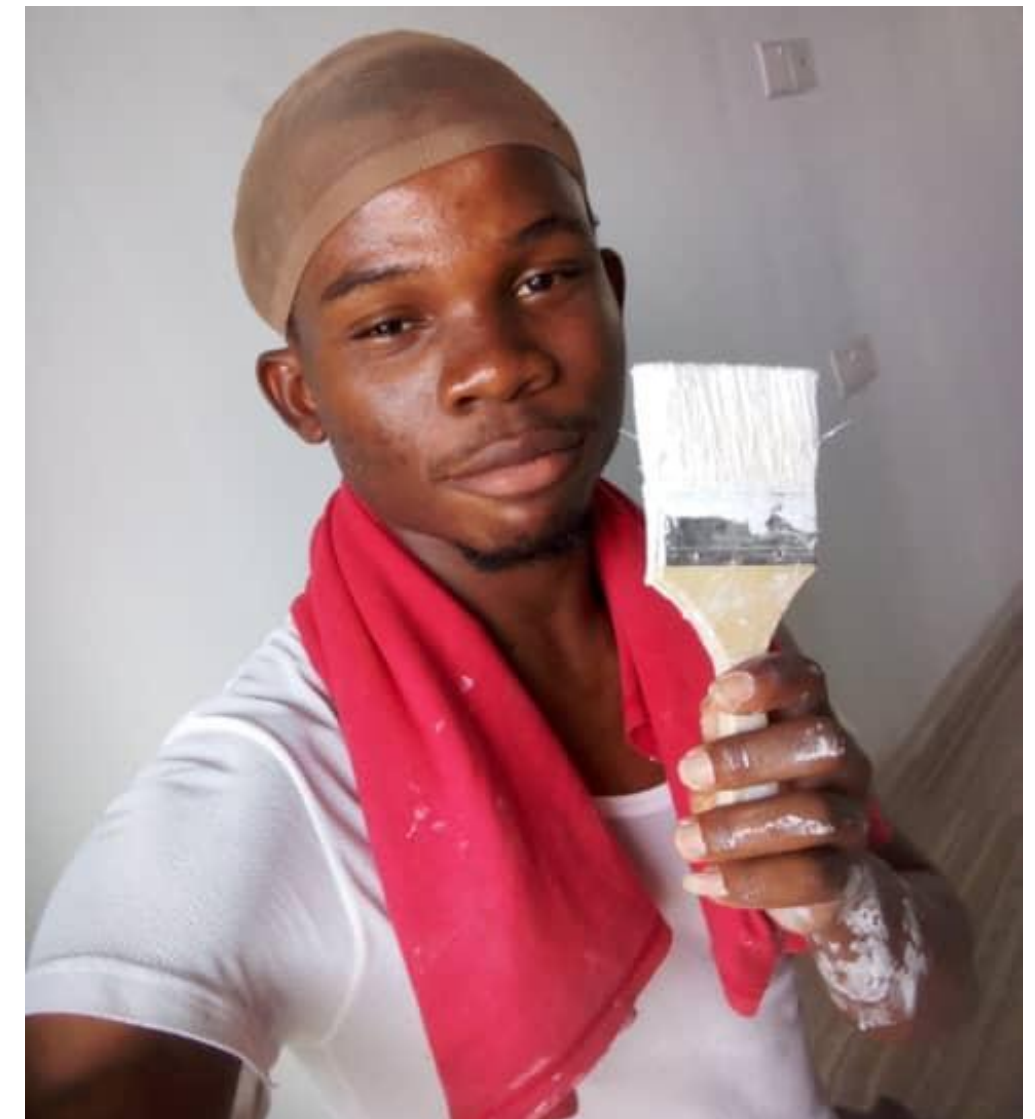
Effective paint production management includes skill assessment, resource optimization, planning, quality control, safety, waste reduction, eco-compliance, training, customer focus, cost control, and continuous improvement.



**GOSPEL:** PRODUCTION MANAGER



**IKECHUKWU:** CEO



**JERRY:** QUALITY CONTROL OFFICER AND OPERATIONAL MANAGER

# Company Mission

- OUR MISSION

- Kaldico Ice elevates production and painting with eco-friendly, high-quality paints for consistent coverage, color fidelity, durability, and reduced environmental impact, enhancing sustainability and performance.

- OUR VISION

- Our vision is to become one of the leading brands in the paint manufacturing industry in the whole of Aha.



# Product

---

- Kaldico Ice Enterprise excels in high-quality paint production and provides services like painting, screeding, POP installation, and industrial cleaning.

- Features include top-notch paint products, skilled professionals, versatile services, and industrial cleaning expertise.

- Benefits encompass superior paint finishes, efficient surface treatments, and comprehensive industrial maintenance solutions.

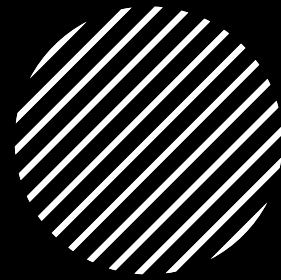
---

# Solution & Positioning

- Kaldico Ice Enterprise excels in premium paint production, painting, screeding, POP installation, and industrial cleaning, meeting market demands for top-tier aesthetics, durability, and cleanliness in construction and maintenance.
- Kaldico Ice Enterprise excels with high-quality paint, painting, screeding, POP installation, and industrial cleaning services, offering versatility and customer satisfaction for residential and industrial clients.



## Market Profile



- Kaldico Ice has positioned itself as a trusted provider of environmentally friendly, premium paints, distinguishing itself in the market. The positive trajectory is underpinned by the growing awareness and commitment to sustainability. Professionals in the construction and design industries increasingly seek eco-conscious alternatives, making Kaldico Ice's offerings highly relevant.

- Market size is \$2.47bn, assumptions are grounded in comprehensive research, encompassing consumer preferences, industry dynamics, and sustainability trends, reinforcing the company's strategic advantage in catering to the evolving demands of professionals and environmentally-conscious customers. This positions Kaldico Ice as a market leader, poised for continued growth and success.



## Competitive Profile

- My competitors include,
  - SACLUX PAINT
  - CLOVER PAINT
  - NICEN PAINT
- In Aba's painting industry, Kaldico Ice competes with local contractors, national paint manufacturers, and emerging startups. We stand out through quality, innovation, and customer-centric strategies and also proffer a complementary cleaning service after painting at low-cost rate to our customers.



# Ask | Use of Funds

---

•The fund when given will be used to invest in the items that are listed below. These items are what will make our company have more revenue and the demand for our products and services are high.

- Paint Mixer
  - Kronos
  - 120 Pieces of Buckets
  - Printing and Branding
  - Chemicals
  - Acrylic
-



## Ask | Use of Funds

---

- For the time we have been in business, there is a lot that we have learned both in good and hard ways. Since we are in this business and have the experience and manpower to make paint ourselves, when we got to learn of this great opportunity of getting a loan that is profit free and is paid in 24 months. We thought we could utilize it to improve our business.

- Paint Mixer
  - Marketing/Advertising
  - Stalk Chemicals
  - Paint Buckets
- 